



Driver & Vehicle Standards Agency

Staying legal:

HGV driver basics



Safety Standards Service

EU DRIVERS' HOURS Driving Limits

This leaflet aims to provide you, the professional driver, with the basic information you need to comply and stay legal. It contains information on drivers' hours, the condition of your vehicle and your responsibilities as a driver.

The full guidance can be found at: www.gov.uk

Key:

- = Rest
- = Driving
- = Other Work

Failure to comply can result in a fixed penalty of up to **£300**, a graduated deposit of up to **£1500** or you could be summoned to court.

Drivers...



Today's records and the previous 28 days

...carry your records

(and digital driver card if one has been issued)

Failure to carry correct records could result in a penalty of **£300**.

DVSA/2665A/ENF/JUNE 14

Visit our websites:

for commercial customers and private motorists
www.gov.uk

for corporate information
www.gov.uk/dvsa

Contact us:

E-mail: enquiries@vosa.gov.uk

Customer Service Centre
0300 123 9000

Monday to Friday - 7.30am until 6.00pm

**Calls provided by BT are charged at a low rate. Charges from other providers may vary.*

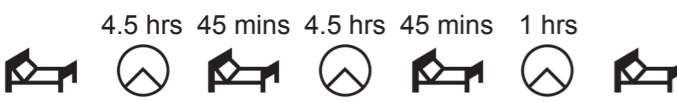
Driving limits and breaks from driving



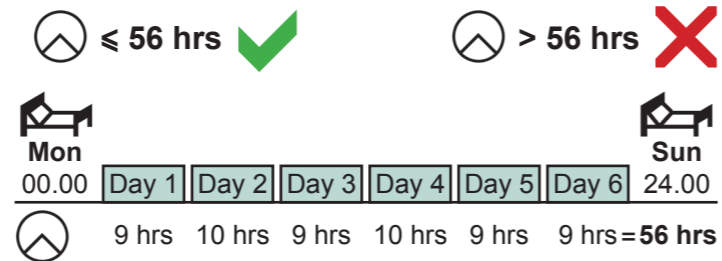
Split breaks



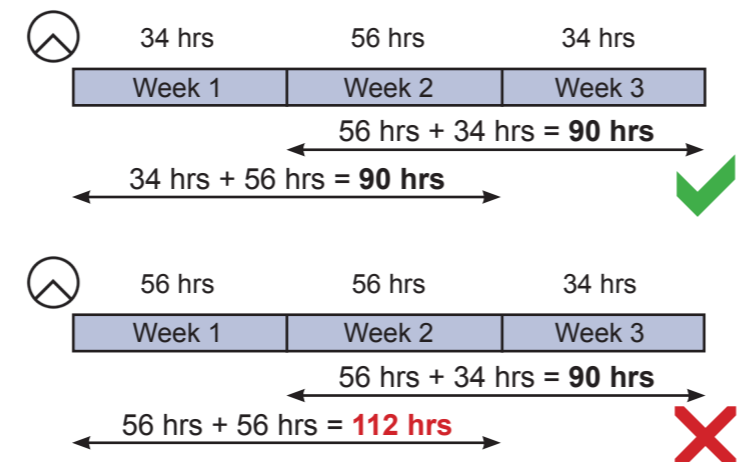
2 X per week maximum = 10 hrs



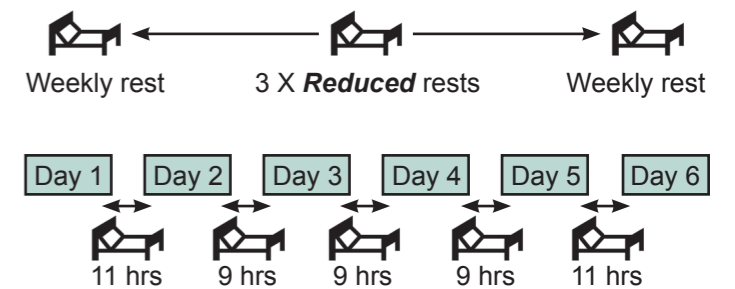
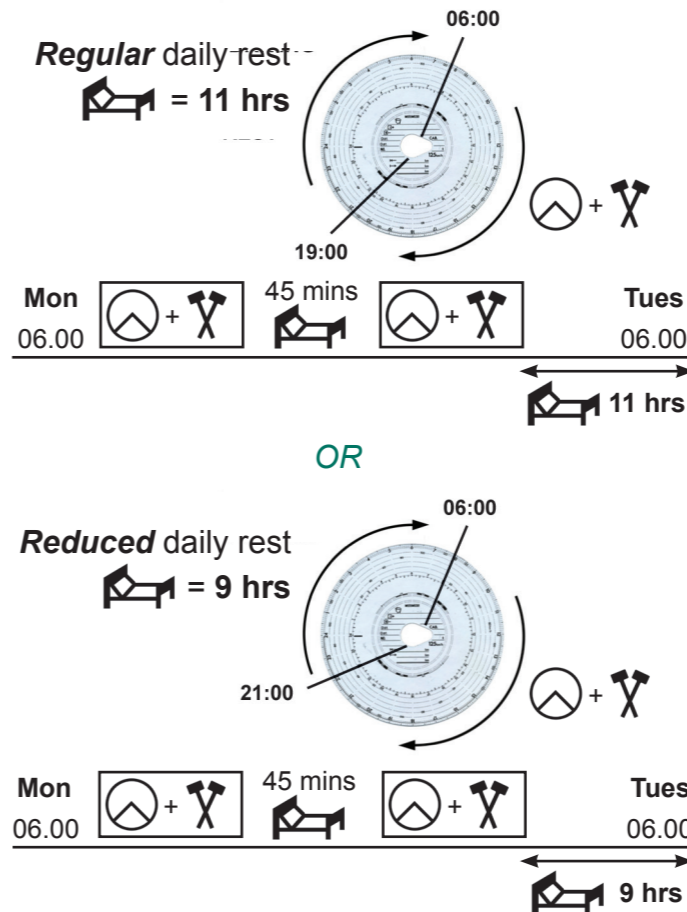
1 week fixed



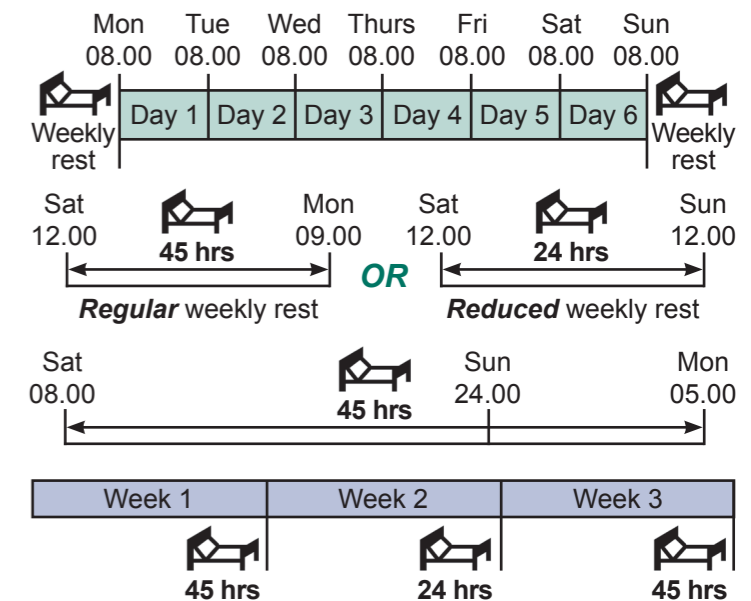
2 weeks



Daily rest



Weekly rest



HGV DRIVERS' WALK AROUND CHECK

BRAKE LINES



ELECTRICAL CONNECTIONS



MIRRORS AND GLASS



BRAKES



FRONT VIEW



STEERING



SECURITY OF LOAD



NUMBERPLATE



MARKERS



REFLECTORS



TYRES AND WHEEL FIXING



SPRAY SUPPRESSION



SECURITY OF BODY/WINGS



BATTERY SECURITY/CONDITION



COUPLING SECURITY



FUEL/OIL LEAKS



LIGHTS AND INDICATORS



HORN



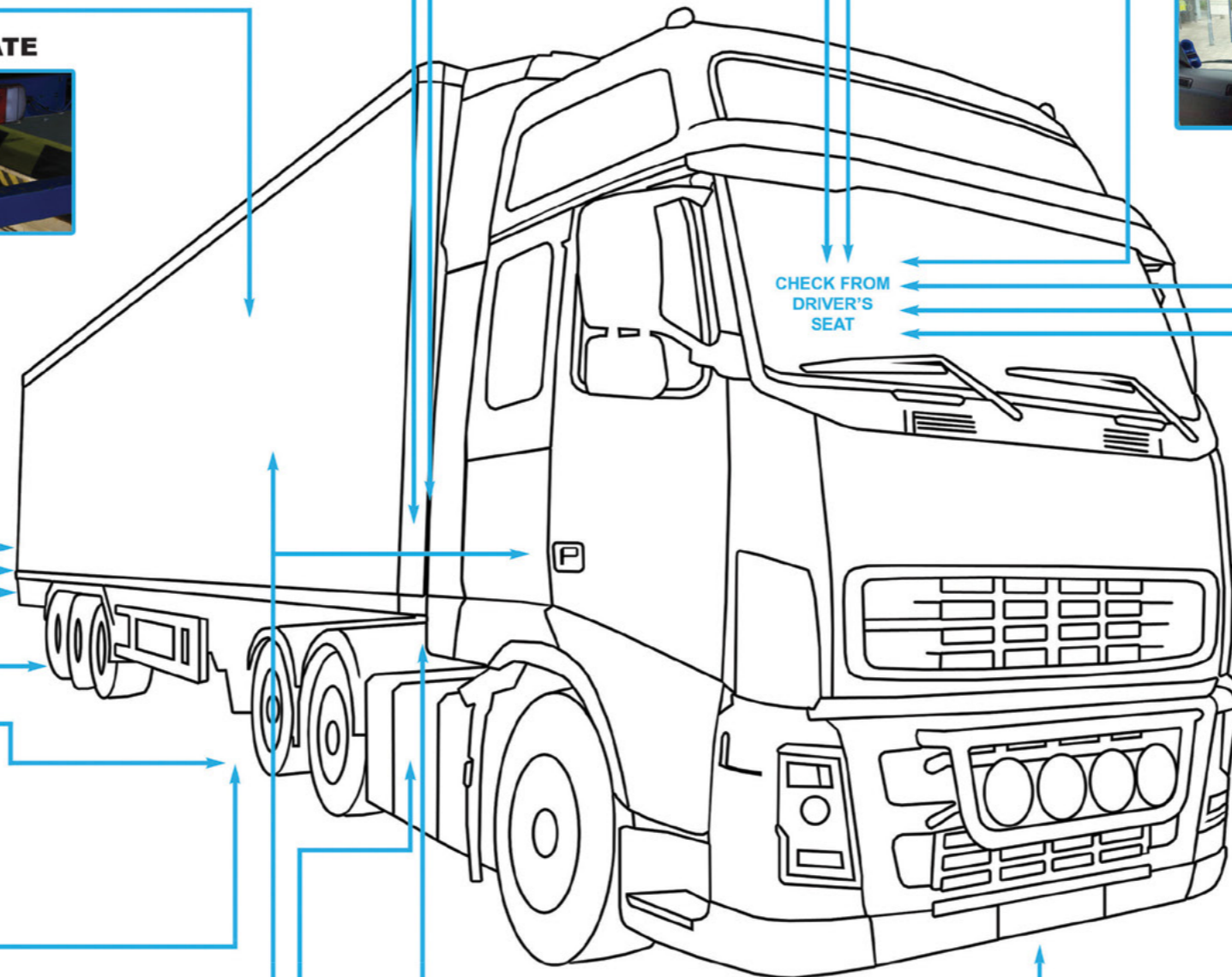
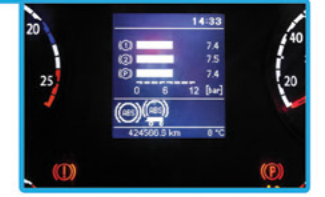
EXCESSIVE ENGINE EXHAUST SMOKE



WINDSCREEN WIPERS AND WASHERS



WARNING LAMP



Failure to comply can lead to a prohibition, a fixed penalty and penalty points on your licence